

Intro to Unit 4 Feed

UNIT DESCRIPTION

This unit will provide you with the knowledge and key understanding of the application of feed law.

You will learn about the legal requirements in relation to food standards, including formal sampling, their application to food. Additionally, you will learn about how food affects health and wellbeing.

WHAT TO EXPECT

Courses are offered each year for this and all Units. You will be taught in line with the unit learning outcomes. It is also expected that you will undertake your own learning, by ensuring you are familiar with all areas shown in the unit syllabi.

Qualification Framework courses will use different learning delivery methods. You will have two classroom-based days with the trainer. Access to an on-line portal that provides you with on-going detailed course notes, inter block assessments plus remote sessions, with the trainer and other trainees.

In addition to this, the trainer may choose to provide, via the on-line portal, videos or other learning materials, as they deem necessary; these additional learning materials will be provided throughout the duration of the course.

You are expected to complete all assessments/assignments, as notified to you, by your trainer. You will upload them for marking, by the designated deadline.

Written exam: You will register for Stage 2 and complete the associated 1.5 hour written exam and demonstrate the knowledge requirements for this subject.

Oral exam: This exam supports the written exam. You will answer specific questions asked by the examiner. Answers will be marked against set criteria.

Portfolio: You will complete the associated portfolio and demonstrate the skills requirement for this subject. You may not take the oral examination if the portfolio is not submitted.

UNIT INFO

Assessment types & Deadlines:

Written exam (1.5 hours)
Oral exam (20 mins)
Portfolio (final submission deadline April)

[Resources information:](#)

Portfolio guidance
Portfolio Matrixes area
Previous examination papers

Unit designated learning hours:

200 hours (delivered by both training and self-learning hours)

Qualifications Team info:

Available Mondays to Fridays.
9am to 4pm

Team members

Sue Steward – Head of Education and Training
Richard Cowles – Education and Training Manager
Marianne Rickwood - Coordinator
Rebecca Taylor – Coordinator
Alex Jones – Education Assistant
Sophia Robinson – Education Assistant

Telephone: 01268 582242

Email: qualifications@tsi.org.uk

Intro to Unit 4 Feed

CLASSIFICATION OF MARKS

All examinations are marked out of 100% and with a pass mark of 40%.

On passing an examination/coursework you will be graded with the following classifications: Distinction, Merit and Pass.

All effort should be made to gain the highest mark possible throughout the examining process.

QUALIFICATION FRAMEWORK REGULATIONS AND POLICIES

All forms of assessment fall within strict regulations and you must ensure you understand and adhere to all regulation requirements.

The regulations that cover all aspects of the Qualification Framework qualifications can be found on our website:

<https://www.tradingstandards.uk/practitioners/training-development/qualifications-resources#stage2info>

Please ensure you are familiar with all aspects within the regulations, taking particular notice of any area relating to examinations, coursework and deadlines.

CTSI will publish announcements surrounding the Qualification Framework qualification from time to time. These are found here:

<https://www.tradingstandards.uk/practitioners/training-development/qualifications-resources#announcementsupdates>

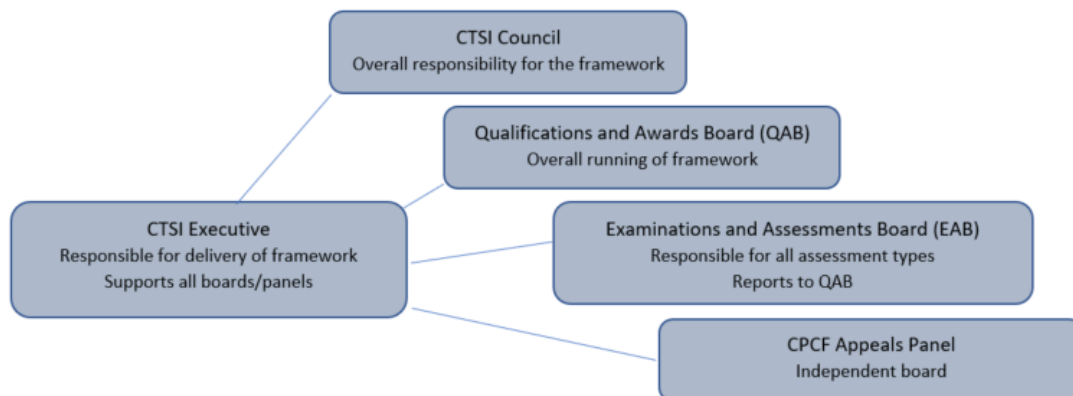
It is important that you are aware of any notifications provided by CTSI throughout the year to ensure you are meeting any/all requirements that the Executive or the Qualifications and Awards Board have put out.

GOVERNANCE

For more detailed information on the governance of the Qualification Framework, you will find this within the regulations. Below outlines the governance structure approved by CTSI Council.

Classification	Marks
Distinction	70-100%
Merit	60-69%
Pass	40-59%
Fails	0-39%

Intro to Unit 4 Feed



UNIT SYLLABI

NOTE: The examiners may expect candidates to show knowledge of legislation which is in existence but not in force, (i.e. Acts which have not finally been enacted, or Regulations which have not reached their commencement date) if it is directly and significantly relevant to the subject-matter of the examination.

Learning Outcomes:

The competence for this module is the demonstration of knowledge and understanding of:

- The role of the Food Standards Agency and Local Authorities in the delivery of feed law policy and enforcement.
- The framework of legislation designed to protect animal health and public health concerning feed law
- An understanding of the legislation and codes of practice relating to feed law
- The recognition of characteristics and features associated with the traceability of feed.

Indicative areas of study

The following terms have been used to indicate the level of knowledge required in each element:

Detailed: To an in-depth level, and with a fine degree of distinction between concept

Working: With the ability to apply the learning to situations so as to resolve problems

Basic: Having an awareness of the organisations and concepts

Assessments will reflect the requisite level of knowledge in each given area of the syllabus.

Syllabus

Detailed knowledge of:

Intro to Unit 4 Feed

- The requirements of Retained EU Regulation 2017/625 on official feed and food controls as it applies to the delivery by officers of official feed controls, the Feed Law Code of Practice, associated Practice Guidance, centrally issued guidance and the FSA's National Enforcement Priorities, as part of official controls
- Registration and approval of establishments and relevant hygiene requirements including the practical application of HACCP at feed business establishments subject to Annex II requirements of Regulation (EC) No 183/2005 on feed hygiene
- The responsibilities placed on feed business operators in respect of feed safety, traceability, presentation of feed, withdrawal and recall of unsafe feed under Regulation (EC) 178/2002 laying down the general principles and requirements of food law
- The UK Early Warning System for Imported Food and Feed, how it operates and its use in monitoring imported feed
- Part IV of the Agricultural Act 1970, as it applies to feed
- Feed sampling methods and techniques in accordance with Regulation (EC) No 152/2009, as amended on the sampling of animal feed
- The range, extent and limitations of enforcement powers and general enforcement sanctions available
- The controls on food safety at the level of primary production laid down in Regulation (EC) 852/2004 on the hygiene of foodstuffs
- The law relating to the import, export, composition, labelling, advertising, marketing and use of feed

Working knowledge of:

- Legal controls on contaminants and additives in feed
- The application of animal by-products and TSE legislation restricting the use and prohibiting certain products being used in animal feed, and the roles other enforcement agencies in enforcing these requirements (VMD and APHA)
- The assurance scheme landscape and its role in improving levels of compliance with feed law, through earned recognition, including the liaison arrangements put in place by the FSA
- The Risk Likelihood Dashboard

Basic knowledge of:

Intro to Unit 4 Feed

- The role of the Agricultural Analyst underpinning scientific assessment of feed safety and labelling and in optimising the use of analytical testing

Indicative areas of knowledge:

- An overview of feed businesses and how they operate
- The status and role of the Food Standards Agency (FSA), Veterinary Medicines Directorate (VMD), Animal and Plant Health Agency (APHA) Local Authorities and other organisations including the role of the agricultural analyst when concerned with feed law.
- Feed legislation and the Feed Law Code of Practice
- Familiarisation of the registration and approval of feed business operators
- An understanding of the roles and responsibilities for managing a feed safety incident.
- Health and safety of enforcement officers during visits to holdings and other Premises
- The bio-security precautions that are required by the industry and appropriate measures for bio-security to be taken by Inspectors when visiting premises involved with primary production on farm.